

KTS

Thermal shopfront



Security is essential when we talk about a front door. KTS Thermal shopfront is a robust system that maximizes security and ensures high thermal isolation thanks to thermal breakage. This mix makes this system an ideal choice for any kind of shopfront.

- Range of shop front and door sections available
- Double glazed unit's standard throughout for improved thermal efficiency
- One section door leaf makes for a cost-effective system with little waste
- Mechanical corner joints on doors to make assembly simple
- Shop front and doors available in dual colour

TECHNICAL FEATURES

A Design

KTS Thermal Shopfront has a logical design based around industry standards and locks, cylinders, flush bolts, closers and panic (touch & crash) bars can be easily sourced.

B Features

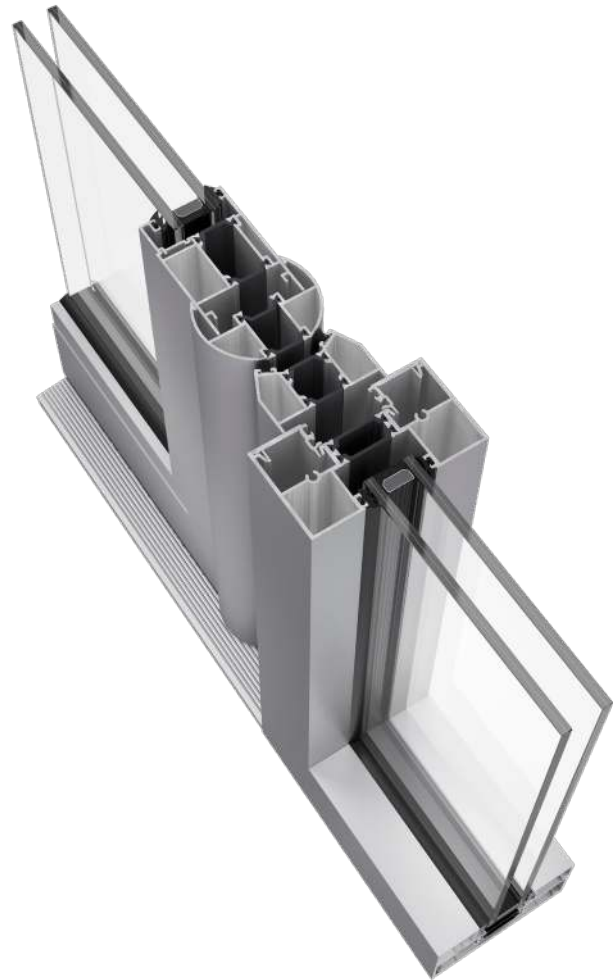
KTS thermal door is manufactured from one section minimising waste. Furthermore, the sash section is supplied in a 6.7 m to enable 1100x2100 mm door to be easily manufactured from just one length. In addition, cutting edge standard and anti-finger trap door leaf design coupled with their fixation to a standard door leaf, the advantages of the single section design don't be lose.

C Benefits

KTS is a thermally efficient door which gives a U value of 1.9 for an 1150x2400 mm single door using a 1.0 centre pane unit. Security is a must in this system giving an increased security option for vulnerable sites. It has been tested to the requirements of PAS 24: 2012 at an independent UKAS accredited test centre.

D Possibilities

KTS Thermal Shopfront has been intelligently designed to save fabrication time. Door closers are fitted using a clever "T" cleat avoiding the need to drill the header bar maintaining integrity and square cut. This system has a complete range of threshold options incorporating a fully rebated cill giving fabricator the choice to suit the application.



Maximum leaf size	1150x2400 mm
Maximum weight	65 kg
Maximum glazing	28.8 mm framing 32.8 mm door
Polyamide	24/32 mm
U _w value*	1.9 W/m²K
U _f value	2.9 W/m²K

*1150x2100 mm & 1.0 mm glass

